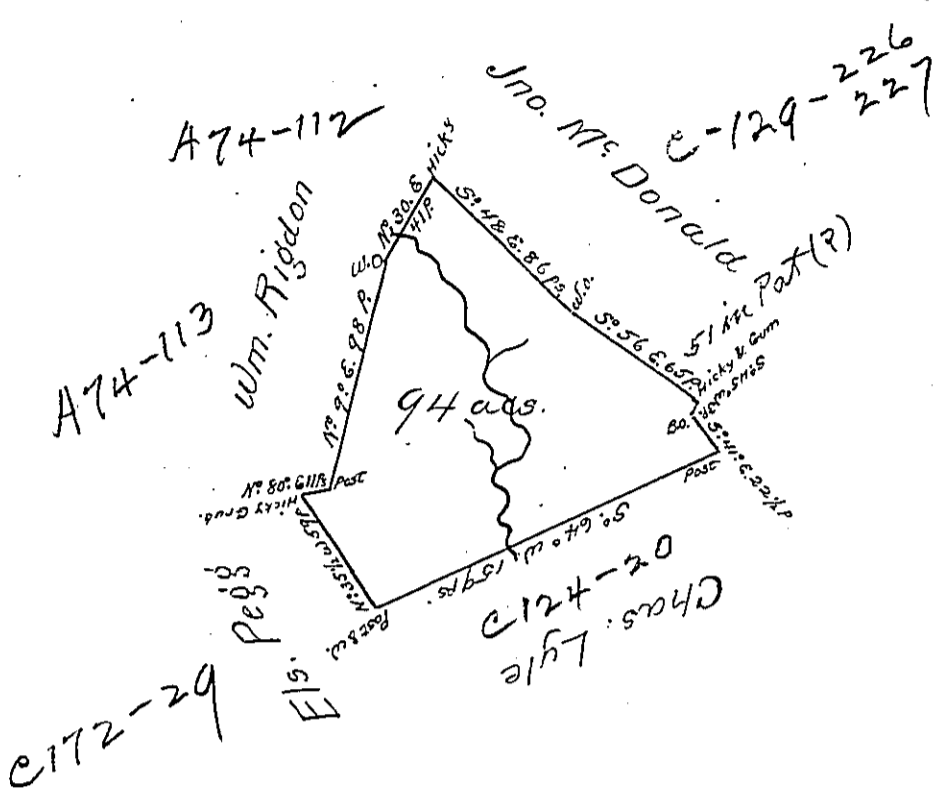


X
239
P-15-457
2-190



A Draught of a Survey called "Goshen" situated on the waters of Peters Creek in Washington County containing 94 acs. and the usual allowce. for Highways &c. executed Octr. 1st. 1788 in pursuance of a warrant granted to James Wallace for 90 acs. dated Sept. 9th. 1788.

Presley Nevill }
 Matthew Ritchie } Dep.

David Brodhead Esqr. S. G.

IN TESTIMONY that the above is a copy of the original remaining on file in the Department of Internal Affairs of Pennsylvania, made conformably to an Act of Assembly approved the 16th day of February, 1833, I have hereunto set my Hand and caused the Seal of said Department to be affixed at Harrisburg, this second day of September 1902

James W. Fatta
 Secretary of Internal Affairs.